

# ? Which Air Ride is Right for YOU!

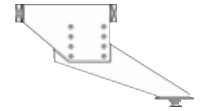
Many RV manufacturers buy pin box assemblies from other manufacturers that specialize in this field. If we can determine the exact make and model of your Pin Box, we probably already have a fit-up model. Some of the names to look for on your pin box are Fabex, Leland, Lippert, Venture, RBW and Atwood, to name a few. If you have that information, you can determine which Pin Box is right for you.

Because the wide variety of manufacturers and the many years that fifth wheel coaches have been built, *Trailair*® does not have a replacement pin box already configured for every coach ever made. If an identification is not clear on the pin box stating the make and model of the pin box, then we may be able to match a *Trailair*® air ride pin box based on style, width, length and bolt pattern by using one of the *Trailair*® multi-fit designs that are drilled on site on the coach.

The RV industry utilizes 4 basic pin box styles: Long, Medium, Short, and Telescoping. Each style has various dimensions and bolt patterns, depending on the manufacturer of the pin box. If the pin box on your coach is not clearly marked, refer to the measurement guide on page 3 and measurement chart on page 4.

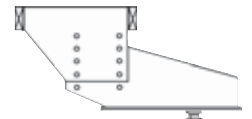
## Application Guide

### Long Style Air Ride Pin Box



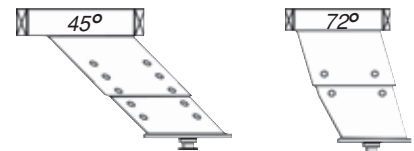
Part Number	Replaces OEM	Select Air Spring By Loaded Pin Weight			
		Range 800-1800#	Range 1801-2500#	Range 2501-3400#	Range 3401-5400#
L02	Fabex 665, MM665	535	224C	26C	20C / or 2B9-200
L03	Venture CJ20515...17				
L03	Steelco/Davis PB02, PB02W				
L04	Fabex 765, RBW 7028				
L05	Lippert 1621				
L06	Fabex 500, 503				
L07	Lippert 1716				
L08	Leland 7920, 7921				
L09	Youngs Welding				

### Medium Air Ride Pin Box



Part Number	Replaces OEM	Select Air Spring By Loaded Pin Weight			
		Range 800-1800#	Range 1801-2500#	Range 2501-3400#	Range 3401-5400#
M14	Fabex 730, RBW 7019	535	224C	26C	20C / or 2B9-200
M15	Lippert 0719				
M16	Fabex 520, 530				
M17	Leland 7910				
M18	Youngs Welding				
M19	Lippert 1116				
M22	Fabex 663, MM663				
M23	Venture CJ13515...17				
M23	Steelco/Davis PB01				

### Telescoping Air Ride Pin Box



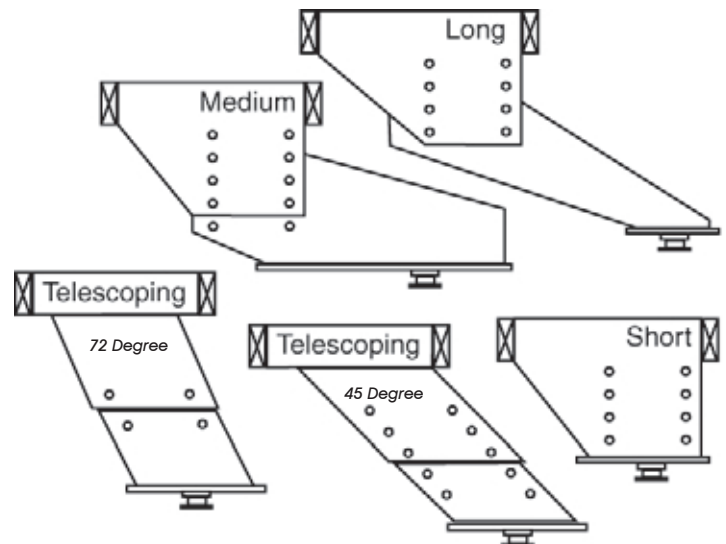
Part Number	Replaces OEM	Select Air Spring By Loaded Pin Weight		
		Range 1000-2000#	Range 2001-3800#	Range 3801-5400#
<b>72 Degree</b>		535	224C	26C
T30	Atwood AB-72			
T36	RBW 7016-2P			
<b>45 Degree</b>		535	224C	26C
10027	Fabex 315			
10034	Fabex 300, 314, 316 Lippert 0516, RBW 7027			
10037	Youngs Welding 8x8 Slant			

# Standard Pin Box Measurement Guide

## 5th Wheel Pin Box Identification...

- Look on the pin box for identification of the pin box manufacturer. Atwood, Fabex, Lippert, Leland, RBW, Venture, Youngs Welding, etc...
- Locate the model number. The number will be from three to seven digits, and can be alpha-numeric. Example Fabex mdl 520.
- If a pin box manufacturer name or model number can not be located, get the last six digits of the Trailair 5th wheel serial number, call the coach manufacture and ask them what make and model pin box was installed on the coach.
- If you can not acquire the information using the above mentioned methods get the following measurements and a Trailair representative will help determine which pin box will fit your coach.

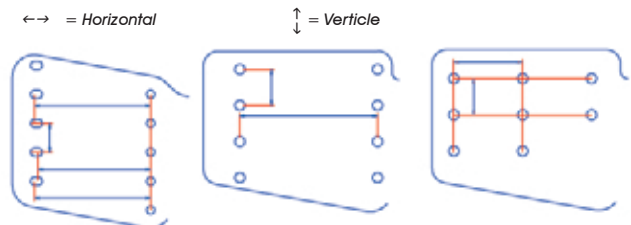
## #1 Basic Pin Box Styles



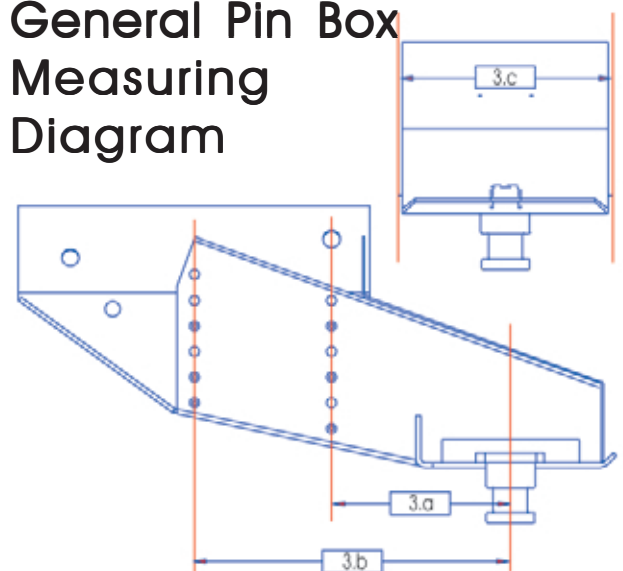
## 5th Wheel Measurement...

- Which pin box style is on the coach?  
 \_\_\_\_\_ PB Style      Long    Medium    Telescoping    Short  
 \_\_\_\_\_ Degree      Degree 34 / 45 / 72
- Measure the distance between the bolt holes. Note that bolt hole patterns vary and may have two or three rows of bolts.
  - Horizontal distance between rows of bolts, measure from center to center of bolt hole.
  - Vertical distance from center bolt hole to center of bolt.
  - If there are three rows of bolts, measure horizontally bolt hole center to bolt hole center.
  - Bolt size?
  - Bolt head size?
  - How many bolts per side?
- Measure from the center of the front row of bolts forward in a horizontal plane, to the center of the king pin. The telescoping and short style pin box king pins may be located behind the front row of bolts. If the rows of bolts are angled, use the center line of the lowest front bolt to measure to the center of the king pin in the retracted position.
  - Measure from the center of the back row of bolts forward in a horizontal plane, to the center of the king pin.
  - Measure the width of the pin box, (not the mounting wings or shroud).
- Use the most recent version of the Trailair Pin Box Measuring Chart to identify the Trailair Part number which replaces the OEM pin box you have now identified to be on your 5th wheel.

## #2 Bolt Hole Patterns



## #3 General Pin Box Measuring Diagram



# Standard Pin Box Measurement Chart

Measurement Guide Questions #→		1	2a	2b	2c	2d	2e	2f	3a	3b	3c
Trailair Number	Replaces OEM	Style	Horz. Dist.	Vert. Dist.	Center Dist.	Bolt Size	Bolt Head Size	Bolt Qty per side	Front row to KP	Back row to KP	Pin Box Width
L02	Fabex 665, M&M 665	Long	75/8,77/8	2	N/A	1/2	3/4	4	18 3/4	26 3/8	12"
L03	Venture CJ20515...17	Long	8	1 1/2	N/A	1/2	3/4	6	18 1/2	26 1/2	12"
L03	Steelco/Davis PB02, PB02W	Long	8	1 1/2	N/A	1/2	3/4	6	18 1/2	26 1/2	12"
L04	Fabex 765	Long	9 1/2	2	4.75	5/8	15/16	3	21 1/2	31	12 1/2"
L04	Fabex 770	Long	9 1/2	2	4.75	5/8	15/16	3	18 1/2	25.5	12 1/2"
L04	RBW 7028	Long	9 1/2	2 1/2	N/A	5/8	15/16	2	20	29 1/2	12 1/2"
L05	Lippert 1621	Long	7 7/8	2	N/A	5/8	15/16	6	17 3/4	25 5/8	12"
L06	Fabex 500	Long	9 1/2	2 1/2	N/A	5/8	15/16	2	20	29 1/2	12 1/2"
L06	Fabex 503	Long	9 1/2	2 1/2	N/A	5/8	15/16	2	18	27 1/2	12 1/2"
L07	Lippert 1716	Long	8 3/4	2 1/2	4 3/8	5/8	15/16	9	20 3/8	29 1/8	12 1/2"
L08	Leland 7920	Long	7	1 1/2	N/A	1/2	3/4	6	18	25	14"
L09	Youngs Welding	Long	9	3	N/A	3/4	1 1/8	4	20	29	12"
M14	Fabex 730	Medium	9 1/2	2 1/2	4.75	5/8	15/16	3	10 1/2	20	12 1/2"
M14	RBW 7019	Medium	9 1/2	2	N/A	5/8	15/16	2	13	22 1/2	12 1/2"
M15	Lippert 0719	Medium	7 7/8	2	N/A	5/8	15/16	6	9	16 7/8	12"
M16	Fabex 520	Medium	9 1/2	2 1/2	N/A	5/8	15/16	2	13 1/2	23	12 1/2"
M16	Fabex 530	Medium	9 1/2	2 1/2	N/A	5/8	15/16	2	11	20 1/2	12 1/2"
M17	Leland 7910	Medium	7	1 1/2	N/A	1/2	3/4	6	9	16	14"
M18	Youngs Welding	Medium	9	3	N/A	3/4	1 1/8	4	8	17	12"
M19	Lippert 1116	Medium	8 3/4	2 1/2	4 3/8	5/8	15/16	9	14 5/8	22 3/8	12 1/2"
M22	Fabex 663, M&M 663	Medium	75/8,77/8	2	N/A	1/2	3/4	6	9 1/2	17 1/8	12"
M23	Venture CJ13515...17	Medium	8	1 1/2	N/A	1/2	3/4	6	9 3/4	17 3/4	12"
M23	Steelco/Davis PB01	Medium	8	1 1/2	N/A	1/2	3/4	6	9 3/4	17 3/4	12"
10027	Fabex 315	Tele. 45 deg.	7 1/8	2 1/8	N/A	5/8	15/16	5 Retracted	0	+10 3/4	9"
10034	Fabex 300, 314, 316, Lippert 0516, RBW 7027	Tele. 45 deg.	7 1/8	2 1/8	N/A	1/2 or 5/8	3/4 or 15/16	5 Retracted	0	+10 3/4	8"
T30	Atwood AB-72	Tele. 72 deg.	7 7/8	2	N/A	1/2	3/4	4 Retracted	-1	+6 7/8	12"
T36	RBW 7016-2P	Tele. 72 deg.	7 1/4	2	N/A	3/4	1 1/8	2 Retracted	-1	+6 1/4	12"
10037	Youngs Welding 8x8 Slant	Tele. 45 deg.	9	1 1/2	N/A	5/8	15/16	4 Retracted	0	9	8"
M16*	Fabex 560	Short	9 1/2	2 1/2	N/A	5/8	15/16	2	+1 1/2	+11	12 1/2"
M19*	Lippert 0115	Short	8 3/4	2 1/2	N/A	5/8	15/16	9	+1 1/2	+10 1/6	12 1/2"
M23*	Venture	Short	8	1 1/2	N/A	1/2	3/4	6	-4	+4	12"

*NOTE: \*Extending the king pin more than 6" may add leverage to the frame of the coach and cause damage. Check with the Manufacturer of the coach to ensure you are within the parameters of the warranty on your coach before extending the pin box more than this amount.*